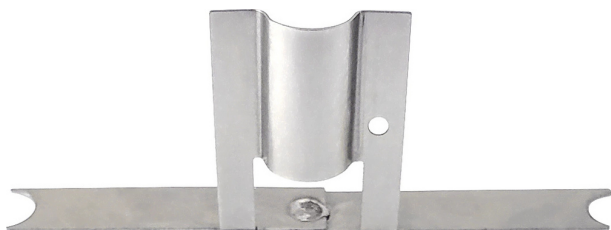


EverTune Side Spring Clip

Federklemme (fits to all EverTune bridges)



How to Install the Side Spring Clip
If required, the side spring clip goes under the faceplate between the two mounting lugs on the high E side.

When installing the bridge it compresses against the rout and the high E module. Since the bridge is now pressed from both sides (the tab on the low E side and this spring clip on the high E side) it should be impossible to have space between saddles. This should correct any saddle to saddle buzzing caused by minute space between saddles.

*

Side Spring Clip sits under the faceplate.

*

Side Spring Clip installed on the high E side.

Allgemeine Informationen

Teil: Federklemme

What is Evertune?

A patented all mechanical guitar bridge system that keeps your guitar in tune under any conditions. And yes, you can bend normally with EverTune. The patented EverTune saddles balance the string tension of guitar strings precisely so that, once you tune your guitar, strings stay in tune forever. It simply will NOT go out of tune....no matter the weather, or how

hard you play.

Video: Cosmos Lyles introduces the Evertune bridge system

Here is a fully animated tutorial video entirely with German written subtitles if enabled in the video: <https://bit.ly/2Yuewam>

In this day where every thing is digital and robotic, it is nice to know that EverTune relies only on Physics and springs. It's a dependable maintenance-free solution for people who like to play hard and sound perfect, every note.

The benefits of EverTune are many, and one of the biggest is intonation. Intonation is how in tune each note is on each fret. Many guitars have spots where notes are always sharp. An example of this would be the first fret when a high nut is installed. Also the frets above 15 are
Fortsetzung auf Seite 2

● Teil: Federklemme

6,00

Barpreis

Bei Sofortkauf können wir Ihnen das Instrument zu diesem Sonderpreis anbieten! Selbstverständlich mit Preisgarantie:

Sollten Sie dieses Produkt bei gleicher Leistung innerhalb von 14 Tagen nach dem Kauf bei einem anderen Anbieter günstiger sehen, erstatten wir Ihnen den Differenzbetrag!

EverTune Side Spring Clip Federklemme (fits to all EverTune bridges)

Fortsetzung von Seite 1:
usually sharp.

Because many of these intonation issues are caused by varying pressure, EverTune is the only technology that can provide perfect intonation for each note on each fret throughout the whole fretboard. If the frets are correctly placed, EverTune will play them all in tune even if a player squeezes the string too hard.

For this reason EverTune is great for studio recording. With its rock solid tuning and perfect intonation, it saves hours in the studio. It is also easy to go back months later and patch in new guitar parts. Whereas conventional guitars struggle to fit seamlessly in to old recordings because their tuning and intonation, and hence their sound, fluctuate with the season, EverTuned guitars will sound consistent month after month. Perfect for the songwriter who would rather trade 5 minutes of inspired recording for 5 minutes of tuning before recording.

Another benefit is that EverTune is the only technology that keeps a guitar in tune regardless of temperature and humidity changes. Temperature makes steel strings expand and contract. This will change the note. Notes get sharp in cold when the steel strings want to contract and flat in heat when the steel strings expand. Humidity can swell a neck, making it longer, and therefore making the notes go sharp as well. EverTune saddles are the only saddles that provide constant tension in these situations and therefore keep the notes in perfect tune. For this reason EverTune is a great choice for live shows and touring bands who are constantly changing locations and ambient temperatures and humidities.

It really works. Check out what artists and customers have said.

Video: A look inside Evertune

Unlike auto-tuned and robot tuned guitars, EverTune is tuned by the player, and therefore can support any tuning. See the tunings and string gauges guide here for more information on string gauges and tunings.

Each saddle on an EverTune bridge can be set for fast bending of notes and for no bending of notes and everywhere in between. This means the low E could be set to not change pitch even when squeezed too hard by the player, while the G, B and high E could be set to bend as soon as the player bends. And it takes just seconds per string.

To see this in action check this video.

Intonation and action usually only have to be set once unless the player changes string gauges and tunings. Setting intonation and action are easier to do with EverTune than with most conventional bridges and often save the player having to get a professional setup and string change.

To have someone professional install in Germany, we recommend UniCut Guitars in Großbeisbach. Modifications of Floyd Rose guitars cannot be offered. Please make sure in advance if your guitar is suitable for modifications and which EverTune model will fit.

Will EverTune fit my guitar?

To see if the EverTune bridge will fit any guitar check the thickness like this:

- * Measure the thickness of the guitar at the bridge.
- * Measure the string height at the bridge.
- * Add the two measurements together and make sure that it is GREATER than 2.1 inches (53mm).

In cases where it is very close, the luthier/tech can make a recessed back plate to accommodate the extra necessary thickness, that is up to the customer and the tech.

Also, there must be solid wood around the bridge area. On 99% of electric guitars this is the case. On heavily chambered guitars and guitars with trapeze bridges (some semi hollow bodies like the ES135, etc), sometimes there is too little wood in the bridge area to attach our bridge to.

If you would like to know more, this video is very helpful:

Video: Will Evertune fit my guitar

Which Model Should I Get?

Measure the string height at the bridge:

* if it is over 1/2 inch (13mm), then it is the G model.

* if it is under, then it usually is the F & T model.

The F and T model are identical EXCEPT that the T model has the plate of metal that wraps around the bridge pick up (like a standard Fender Telecaster bridge does).

Can I install this myself?

To install an EverTune bridge a route pocket must be cut into the guitar. Anyone who is comfortable with wood working and has a router, CNC, or manual milling machine can make the appropriate modifications to his/her guitar.

When installing into guitars that had a tremolo, the tremolo pocket usually extends passed the EverTune bridge and will be visible as a hole unless the installer plugs it (preferably with wood from the back of the guitar that would be cut out during the installation).

In the case of routing the pocket manually, we do sell template sets that are complete with all the tools needed for the installation. We also have available files of the pocket dimensions and of the bridge dimensions for each model of bridge for those who want to make their own templates or program the pocket via CNC.

There are also videos for the F&T model and G model installation. For the G model installation video, please note that some parts of the video show a dated method and obsolete tools. There is a note during this section of the video to refer to the G model template written instructions. The written instructions will always be the most up to date instructions.

For more detailed information:
<https://www.evertune.com/shop/index.php>

If you have any questions, don't hesitate to ask!



76133 Karlsruhe | Kaiserstr. 175 | Telefon 0721-1302-0
75173 Pforzheim | Dillsteiner Str. 15 | Telefon 07231-23685
76829 Landau | Westbahnstr. 14 | Telefon 06341-85000
77652 Offenburg | Lange Straße 55 | Telefon 0781-71058

Rund um die Uhr einkaufen: www.schlaile.de